

Compact and totally enclosed digital pressurisation units with electronic pressure transducer and user-friendly microprocessor for use on sealed system in order to provide a minimum system pressure requirement.

The Flexfiller is a floor standing, flow rate (up to 18 l/min) top-up pressurisation unit with 18 litre internal break tank. Ideal for Industrial, commercial or large domestic applications. Available in single or twin pump configuration.

Application:

- Commercial, Industrial and Residential.

System Volume (Guide): < 300,000 litres.

Advantages

Product Features:

- For system volumes up to 300,000 litres.
- Fluid Protection Category 5 (AB Weir Overflow).
- System fill mode.
- Onscreen Service Reminder - 12 Months.
- Electric pump, 230V 50Hz 1ph (2160D: 415V 50Hz 3ph).
- Colour: Black (RAL 9005).
- MODBUS RTU Communication Protocol.
- Password protected.
- Sequential programming menu.
- Pressure setting in 0.1 bar increments.
- Pump pulse option.
- Flood Protection (Pump Runtime Limiter, Excessive Start Alarm).
- Event logging: Alarm activations, Pump Run counter (activations per pump), Cumulative run timer (hours per pump), Electrical interruption.
- Volt free contacts: Common Alarm (N/C), High Pressure Alarm (N/O), Low Pressure Alarm (N/O), Sensor Health (N/O), Pump 1 Health (N/O), Pump 2 Health (N/O).



Technical Specifications

Operating Conditions:

- System temperature range at point of connection: 5 °C / 85 °C.
- Ambient temperature range: 5 °C / 40 °C.
- Pressure rating: PN 10.
- Relative humidity 95% non-condensing.
- Noise Rating Data: < 75 dBA.

Certifications and Standards Applied:

- PED 2014/68/EU Sound Engineering Practice.
- IEE - Electrical Safety Guidance.
- EMC 2004/108/EC.
- BS 7074 Parts 1 to 3.
- Machinery Directive 2006/42/EC.
- Electronic Components have been tested and comply with the EMC Directives.
- EN 61000-6-1: Generic Standards – Immunity standard for industrial environments.
- EN 61000-6-2: Generic Standards – Immunity standard for industrial environments.
- EN 61000-6-3: Generic Standards – Emission standard for residential, commercial and light industrial environment.
- CE marked components, where applicable.
- WRAS approved float valve to BS1212.
- IP54 (BS EN60529) rated controller.

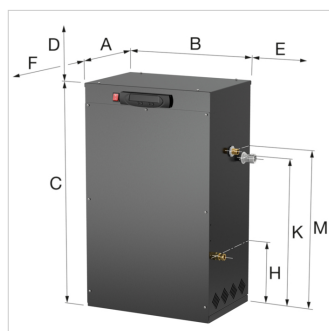
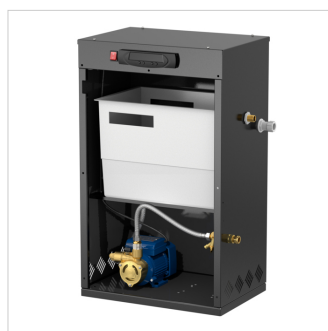
Material of Construction:

- Cabinet: Mild steel CR4 Powder Coated.
- Float: WRAS approved.
- Break Tank: Polypropylene.
- Connection: Brass / Polypropylene.
- Pipework: Braided Flexhose / EPDM / Copper.
- Finish: Powder coated.
- Valves: Brass / PTFE.

Description	Flexfiller 250D	
Order Code	17398	
GTIN	08712874173989	
Model	<u>Flexfiller</u>	
Pump quantity	2	
Connections	System [mm]	15 ($\frac{1}{2}$ " M)
	Mains Supply [mm]	15 ($\frac{1}{2}$ " M)
	Overflow [mm]	22
Max. Delivery Pressure [bar]	6.0	
Power Consumption [kW]	2 x 0.50	
Full Load Current [A]	3.4	
Weight [kg]	39	

Dimensions Flexfiller

Type	Dimensions								
	A [mm]	B [mm]	C [mm]	D [mm]	E [mm]	F [mm]	H [mm]	K [mm]	M [mm]
Flexfiller 125D - 280D	330	480	760	500	150	800	220	520	580
Flexfiller 2160D	660	470	1090	500	150	800	370	690	740



Classification General Data

Etim Group	Pressurization and expansion systems
Etim Class	Central heating refill installation
Product Name	Flexfiller 250D
Brand	FLAMCO
Product Type	Top Up Units
Order Code	17398
GTIN	08712874173989

Attributes

Suitable for membrane pressure expansion tank	Yes
Suitable for compressor-controlled automatic expansion unit	Yes
Connections	Internal thread cylindrical BSPP-G (ISO 228-1)
Nominal diameter	1/2 inch (15)
Outer pipe diameter 1 supply	21.3 Millimetre
Outer pipe diameter 1 return	21.3 Millimetre
Outer pipe diameter 2 supply	21.3 Millimetre
Outer pipe diameter 2 return	21.3 Millimetre
Max. installation content	50000 Litre
With filter	No
With de-aerator	No
Pressure	1 - 5 bar
With collection function for expansion water	No
Filling pipe connection	Internal thread
Max. operating pressure	5 Bar
With drain funnel	No
With automatic filling function	Yes
Connection size of filling pipe	21.3 Millimetre
Height	800 Millimetre
Barrier	Other
Width	470 Millimetre
Category of system separator	Other
Depth	320 Millimetre
With pressure reducer	No
Suitable for softening	No
With system separator	No
Max. temperature at the inlet	85 Degrees celsius
Max. temperature at the outlet	85 Degrees celsius
Suitable for full demineralization	No
Suitable for pH value stabilization	No
With pressure gauge	No
Suitable for fixed installation	Yes
Suitable for mobile use	Yes
With insulation	No

Find more information online:

[Installation and operating instructions](#)

[Kiwa certificate K13471/08](#)

[UK Declaration of Conformity](#)

[EU Declaration of Conformity](#)

[Flexfiller DXF](#)

[Flexfiller RFA](#)

[Flexfiller STEP](#)

[Flexfiller IGES](#)

[Collection Pressurisation Units REVIT](#)

[Collection Pressurisation Units DXF](#)

[Collection Pressurisation Units STEP](#)

[Collection Pressurisation Units IGES](#)

[Overview of spares kits](#)

[Spare parts list](#)

[Product Datasheet Flexfiller](#)

[Product Datasheet Flexfiller 2160D](#)

[Packaging data](#)

Fort Blauwkapel 1
1358 DB, Almere - nl

T +31 (0)36 52 62 300
E info@aalberts-hfc.com
I flamcogroup.com