

Compact and totally enclosed digital pressurisation units with electronic pressure transducer and user-friendly microprocessor for use on sealed system in order to provide a minimum system pressure requirement.

The Flexfiller is a floor standing, flow rate (up to 18 l/min) top-up pressurisation unit with 18 litre internal break tank. Ideal for Industrial, commercial or large domestic applications. Available in single or twin pump configuration.

Application:

- Commercial, Industrial and Residential.

**System Volume (Guide): < 300,000 litres.**

### Advantages

Product Features:

- For system volumes up to 300,000 litres.
- Fluid Protection Category 5 (AB Weir Overflow).
- System fill mode.
- Onscreen Service Reminder - 12 Months.
- Electric pump, 230V 50Hz 1ph (2160D: 415V 50Hz 3ph).
- Colour: Black (RAL 9005).
- MODBUS RTU Communication Protocol.
- Password protected.
- Sequential programming menu.
- Pressure setting in 0.1 bar increments.
- Pump pulse option.
- Flood Protection (Pump Runtime Limiter, Excessive Start Alarm).
- Event logging: Alarm activations, Pump Run counter (activations per pump), Cumulative run timer (hours per pump), Electrical interruption.
- Volt free contacts: Common Alarm (N/C), High Pressure Alarm (N/O), Low Pressure Alarm (N/O), Sensor Health (N/O), Pump 1 Health (N/O), Pump 2 Health (N/O).



### Technical Specifications

#### Operating Conditions:

- System temperature range at point of connection: 5 °C / 85 °C.
- Ambient temperature range: 5 °C / 40 °C.
- Pressure rating: PN 10.
- Relative humidity 95% non-condensing.
- Noise Rating Data: < 75 dBA.

#### Certifications and Standards Applied:

- PED 2014/68/EU Sound Engineering Practice.
- IEE - Electrical Safety Guidance.
- EMC 2004/108/EC.
- BS 7074 Parts 1 to 3.
- Machinery Directive 2006/42/EC.
- Electronic Components have been tested and comply with the EMC Directives.
- EN 61000-6-1: Generic Standards – Immunity standard for industrial environments.
- EN 61000-6-2: Generic Standards – Immunity standard for industrial environments.
- EN 61000-6-3: Generic Standards – Emission standard for residential, commercial and light industrial environment.
- CE marked components, where applicable.
- WRAS approved float valve to BS1212.
- IP54 (BS EN60529) rated controller.

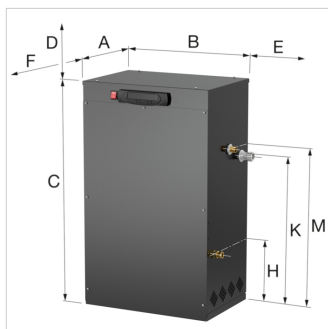
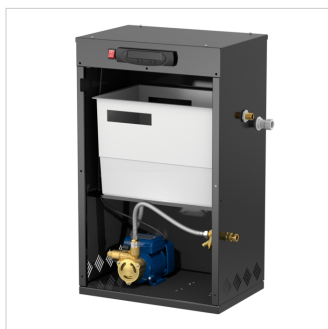
#### Material of Construction:

- Cabinet: Mild steel CR4 Powder Coated.
- Float: WRAS approved.
- Break Tank: Polypropylene.
- Connection: Brass / Polypropylene.
- Pipework: Braided Flexhose / EPDM / Copper.
- Finish: Powder coated.
- Valves: Brass / PTFE.

|                              |                   |                         |
|------------------------------|-------------------|-------------------------|
| Description                  | Flexfiller 225D   |                         |
| Order Code                   | 17397             |                         |
| GTIN                         | 08712874173972    |                         |
| Model                        | <u>Flexfiller</u> |                         |
| Pump quantity                | 2                 |                         |
| Connections                  | System [mm]       | 15 ( $\frac{1}{2}$ " M) |
|                              | Mains Supply [mm] | 15 ( $\frac{1}{2}$ " M) |
|                              | Overflow [mm]     | 22                      |
| Max. Delivery Pressure [bar] | 3.0               |                         |
| Power Consumption [kW]       | 2 x 0.37          |                         |
| Full Load Current [A]        | 2.6               |                         |
| Weight [kg]                  | 35                |                         |

**Dimensions Flexfiller**

| Type                   | Dimensions |        |        |        |        |        |        |        |        |
|------------------------|------------|--------|--------|--------|--------|--------|--------|--------|--------|
|                        | A [mm]     | B [mm] | C [mm] | D [mm] | E [mm] | F [mm] | H [mm] | K [mm] | M [mm] |
| Flexfiller 125D - 280D | 330        | 480    | 760    | 500    | 150    | 800    | 220    | 520    | 580    |
| Flexfiller 2160D       | 660        | 470    | 1090   | 500    | 150    | 800    | 370    | 690    | 740    |



**Classification General Data**

|                     |                                      |
|---------------------|--------------------------------------|
| <b>Etim Group</b>   | Pressurization and expansion systems |
| <b>Etim Class</b>   | Central heating refill installation  |
| <b>Product Name</b> | Flexfiller 225D                      |
| <b>Brand</b>        | FLAMCO                               |
| <b>Product Type</b> | Top Up Units                         |
| <b>Order Code</b>   | 17397                                |
| <b>GTIN</b>         | 08712874173972                       |

**Attributes**

|  |  |
|--|--|
| <b>Suitable for membrane pressure expansion tank</b>               | Yes  |
| <b>Suitable for compressor-controlled automatic expansion unit</b> | Yes  |
| <b>Connections</b>   | Internal thread cylindrical BSPP-G (ISO 228-1) |
| <b>Nominal diameter</b>  | 1/2 inch (15)                                  |
| <b>Outer pipe diameter 1 supply</b>                                | 21.3 Millimetre                                |
| <b>Outer pipe diameter 1 return</b>                                | 21.3 Millimetre                                |
| <b>Outer pipe diameter 2 supply</b>                                | 21.3 Millimetre                                |
| <b>Outer pipe diameter 2 return</b>                                | 21.3 Millimetre                                |
| <b>Max. installation content</b>                                   | 50000 Litre                                    |
| <b>With filter</b>   | No   |
| <b>With de-aerator</b>   | No   |
| <b>Pressure</b>  | 1 - 2.5 bar                                    |
| <b>With collection function for expansion water</b>                | No   |
| <b>Filling pipe connection</b>                                     | Internal thread                                |
| <b>Max. operating pressure</b>                                     | 2.5 Bar  |
| <b>With drain funnel</b>   | No   |
| <b>With automatic filling function</b>                             | Yes  |
| <b>Connection size of filling pipe</b>                             | 21.3 Millimetre                                |
| <b>Height</b>  | 800 Millimetre                                 |
| <b>Barrier</b>   | Other  |
| <b>Width</b>   | 470 Millimetre                                 |
| <b>Category of system separator</b>                                | Other  |
| <b>Depth</b>   | 320 Millimetre                                 |
| <b>With pressure reducer</b>                                       | No   |
| <b>Suitable for softening</b>                                      | No   |
| <b>With system separator</b>                                       | No   |
| <b>Max. temperature at the inlet</b>                               | 85 Degrees celsius                             |
| <b>Max. temperature at the outlet</b>                              | 85 Degrees celsius                             |
| <b>Suitable for full demineralization</b>                          | No   |
| <b>Suitable for pH value stabilization</b>                         | No   |
| <b>With pressure gauge</b>   | No   |
| <b>Suitable for fixed installation</b>                             | Yes  |
| <b>Suitable for mobile use</b>                                     | Yes  |
| <b>With insulation</b>   | No   |

**Find more information online:**[Installation and operating instructions](#)[Kiwa certificate K13471/08](#)[UK Declaration of Conformity](#)[EU Declaration of Conformity](#)[Flexfiller DXF](#)[Flexfiller RFA](#)[Flexfiller STEP](#)[Flexfiller IGES](#)[Collection Pressurisation Units REVIT](#)[Collection Pressurisation Units DXF](#)[Collection Pressurisation Units STEP](#)[Collection Pressurisation Units IGES](#)[Overview of spares kits](#)[Spare parts list](#)[Product Datasheet Flexfiller](#)[Product Datasheet Flexfiller 2160D](#)[Packaging data](#)

Fort Blauwkapel 1  
1358 DB, Almere - nl

T +31 (0)36 52 62 300  
E [info@aalberts-hfc.com](mailto:info@aalberts-hfc.com)  
I [flamcogroup.com](http://flamcogroup.com)